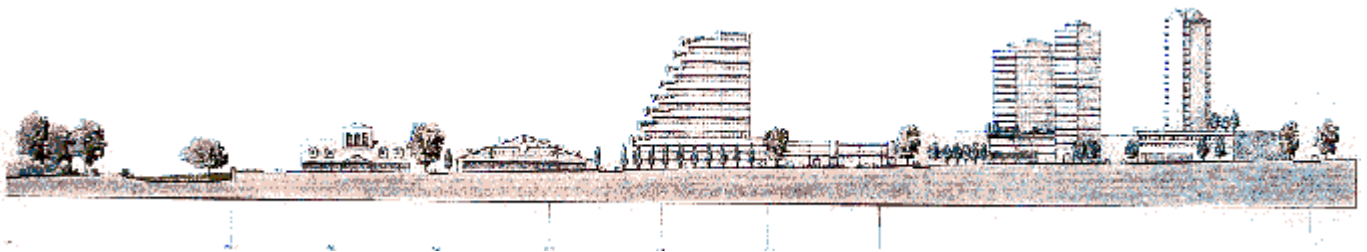


centre from the illustrative site plan. The high-rise neighbour- hood is at lower left and is connected to the main centre via an elevated pedestrian bridge shown crossing King George Highway. The main transit stop is located under this bridge, and paired office towers are located at its northeast end. The large rectangular building next to the office towers is the community market. Four-storey residential buildings occupy the sites to the northwest and the southeast of the towers. The smaller building (tinted blue) is for municipal and social service functions. A public square provides the setting for these buildings and connects the concentrated centre to the central park and the stream system to the northeast.



Above:
A sectional view through the concentrated centre.
From left to right are the public park, the public
services building, the public market, the office
towers, King George Highway (with the
pedestrian bridge and transit stop), and, at the far
right, the high-rise neighbourhood.